



WHERE THE SPIRIT OF THE LORD IS  
**THERE IS FREEDOM**

Catholic Foundation of Northeast Kansas | 2017-2018 Annual Report



“

Where the Spirit  
of the Lord is,  
there is freedom.”

2 Corinthians 3:17

The Catholic Foundation of  
Northeast Kansas is pleased to  
present this Annual Report to you,  
our dear friends, fund-holders,  
donors, and fellow Catholics with  
a fervent hope that this publication  
will hearten and enlighten  
you. Both the Catholic Church  
and the Catholic Foundation of  
Northeast Kansas desires a deep  
transformation, of each of us, into  
the very image of Jesus Christ – to  
experience a liberty that can only  
come from the pursuit of Him.



Archbishop  
Joseph F. Naumann

A handwritten signature of Archbishop Joseph F. Naumann in black ink.

Dear Friends in Christ,

The Holy Spirit empowers each of us with the freedom to walk in a new life in Christ. St. Paul writes, “Where the Spirit of the Lord is, there is freedom.”

Our Christian understanding of freedom is quite different than the prevailing concept in our secular culture. The notion of freedom popular in our society is the ability to do whatever we want as long as it does not harm anyone else. The Christian understanding of authentic freedom is the ability to choose the good and the noble, no matter the external circumstances of our life.

Each of us is blessed with the freedom to live a holy and fruitful life. “But the fruit of the Spirit is love, joy, peace, forbearance, kindness, goodness, faithfulness, gentleness and self-control. Against such things, there is no law. Those who belong to Christ Jesus have crucified the flesh with its passions and desires. Since we live by the Spirit, let us keep in step with the Spirit.” Galatians 5:22-25

The gifts of the Holy Spirit are manifested every day in the goodness of our faithful Catholic community in Northeast Kansas. I witness the fruits of the Holy Spirit in the wisdom of clergy and our parish and school leaders, in the dedication of our teachers and employees, in the kindness and generosity of thousands of Catholic faithful.

In these pages, you will read about the recipients of our Deo Gratias Awards, St. Gregory the Great Catholic Church, and Mr. Don Landoll, Marysville, Kansas, and to them I offer my sincere congratulations.

With this publication, we commemorate 30 years in the life of this worthwhile organization that stewards responsibly the gifts of the Church for the benefit of those who come after us. In October 2019, the Catholic Foundation of Northeast Kansas will recognize its own 30th anniversary milestone with a pilgrimage that I will lead to the Holy Land.

Freedom in Jesus Christ starts from salvation and extends into eternity. The gift of hope is God’s love poured out into our hearts through the Holy Spirit, who has been given to us. (Romans 5:5). It is my hope that the Catholic Foundation of Northeast Kansas and all those reading this Annual Report will continue to ensure that future generations experience the ministries and sacraments of our Catholic faith. I extend to the CFNEK Board of Directors and staff, and to each donor and friend, my deepest appreciation.

Sincerely yours in Jesus, the Lord of Life,  
Archbishop Joseph F. Naumann





Lesle M. Knop  
Executive Director

*Lesle M. Knop*

Dear Friends,

In order to prepare for this 30th year milestone in the history of the Catholic Foundation of Northeast Kansas, we looked in old files and archives. We found faded facsimile pages (remember fax machines?) and real “carbon copies” of letters and memos from leaders and archbishops who established our organization. For each person whose name I came across, I gave thanks. During their lifetimes, they made a difference. They left a legacy by sharing their time, their talents, and their treasure. For their gifts, let us be truly grateful.

In the 30 years of our existence, the Catholic Foundation of Northeast Kansas has provided distributions of income and principal in excess \$56 million since inception in 1989, while growing to \$92,249,059 in assets under management.

This past year, we have been blessed with unique opportunities to serve parishes, schools, and Catholic organizations. Among them was the introduction, on behalf of the Archdiocese of Kansas City in Kansas, a successful Giving Tuesday opportunity called “#iGiveCatholic.” We attracted artists from throughout the country for the first Regional Juried Christian Arts Competition and Exhibition, and served our Catholic youth with the fifth annual Archbishop’s High School Juried Art Show. We presented the ninth annual Continuing Education Seminar for our Catholic community of professional advisors. We set a new record of Catholic Legacy Society members. We advocated for a culture of planned giving to ensure a strong foundation for the future Church in Northeast Kansas.

Our mission is simple: The Catholic Foundation of Northeast Kansas will continue to strive for investments that adhere to Catholic teaching while providing long-term value for our fund-holders. My prayer for you is that the Holy Spirit will reveal God’s Word to you so that you may live a fruitful life that brings honor to God. I pray also that this Annual Report, as it becomes a dusty artifact, will remind future Catholics of the great work that you are doing today.

Your sister in Christ,  
Lesle M. Knop, CFRE



# #iGIVECATHOLIC



#iGiveCatholic is a 24-hour online campaign held annually on Giving Tuesday. The Catholic Foundation of Northeast Kansas sponsored this giving day on November 28, 2017, for the parishes, schools, and ministries within the Archdiocese of Kansas City in Kansas to fundraise for special case elements of their choosing. 46 organizations were registered, seven live training sessions were conducted, and collectively over \$323,000 was raised.

We celebrated the generosity in our Catholic community, and beyond, by watching the donations being made in real-time.

We celebrated the generosity in our Catholic community, and beyond, by watching the donations being made in real-time to the participating organizations. It was a pleasure to be engaged with, and see the success our parishes, schools, and ministries had, to carry out their unique case elements to better serve their communities.

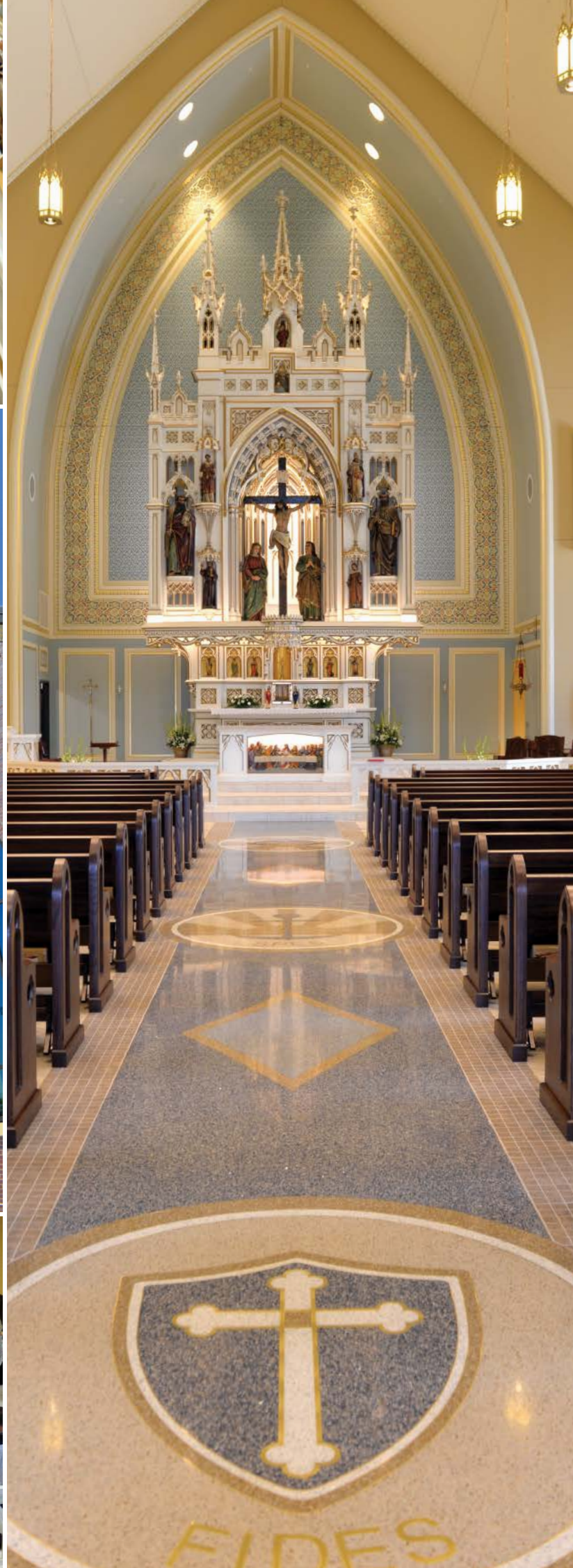
24  
Hour Online Campaign

46  
Registered Organizations

7  
Live Training Sessions

\$323,000  
Collectively Raised





DEO GRATIAS AWARD – 2018

# DISTINGUISHED CATHOLIC ORGANIZATION AWARD

## ST. GREGORY THE GREAT, MARYSVILLE

The St. Gregory the Great's community began fundraising for their new church in 2015. Through many generous donors and supporters the new church was completed by May 2018. The new church included a 43 ft. tall centerpiece called a 'reredos' that was built in Austria in 1867 for the second German church in New Jersey that closed in 2012. The 'reredos' also includes 17 hand-carved wood statues each carved from one single trunk.

On May 26, 2018, Archbishop Joseph Naumann, along with Fr. Nathan Haverland, dedicated a newly completed St. Gregory the Great's Church, but their history began in 1859 when Bishop John Baptist Miede was serving Catholics in the area.

The Parish was officially recognized in 1862 completing its first building in 1875. In 1877, four acres were purchased for the St. Gregory's Cemetery, and in 1906, the St. Gregory's School was dedicated. Since that time, St. Gregory's leaders and members have remained dedicated to supporting their community assuring, they would be there for many years to come.

In 1996, St. Gregory's Parish established two endowed funds with the Catholic Foundation of Northeast Kansas. The Church had a desire to ensure a strong financial future, so they didn't stop there. Between 1996 and 2007, St. Gregory's established three more funds. Combined, their endowed funds have grown to more than \$890,000.00.

Combined, their endowed funds have grown to more than \$890,000.

St. Gregory's Catholic Church also has a growing Catholic Legacy Society. For these reasons, St. Gregory the Great's Parish was nominated to be honored with the 2018 Deo Gratias Distinguished Catholic Organization Award by the Catholic Foundation of Northeast Kansas.

## DEO GRATIAS AWARD OVER THE YEARS

- 2011 Bishop Ward High School
- 2012 Holy Spirit (Overland Park)
- 2013 Sacred Heart (Emporia)
- 2014 St. Ann (Prairie Village)
- 2015 Catholic Charities of Northeast Kansas
- 2016 Catholic Cemeteries of Northeast Kansas
- 2017 Immaculate Conception St. Joseph Parish, Leavenworth



DEO GRATIAS AWARD  
OVER THE YEARS

- 2011  
Charles and Antoinette Berkel
- 2012  
Leonard and Ellen McKinzie Family
- 2013  
Bernie and Jackie Madden
- 2014  
Monsignor Tom Tank
- 2015  
Archbishop Emeritus James Keleher
- 2016  
Tom & Mickey Zarda / Ben & Betty Zarda
- 2017  
The William H. Dunn, Sr. Family

DEO GRATIAS AWARD – 2018

DISTINGUISHED  
CATHOLIC  
INDIVIDUAL  
AWARD

DON LANDOLL, MARYSVILLE, KANSAS

Everyone grows up wondering how he/she is going to leave a lasting impression. In a legacy spanning 75 years, this impression comes in the form of an entrepreneurial spirit that spans the globe. Whether it is piece of farm equipment in the Midwest, a trailer unloading a piece of construction equipment in California or a forklift moving missiles in the belly of an aircraft carrier in Pacific Ocean, rest assured the Landoll Corporation and the Landoll Family are known far and wide. Locally, their reputation for quality manufacturing goes hand-in-hand with the spirit of giving back!

In a legacy spanning 75 years, this impression comes in the form of an entrepreneurial spirit that spans the globe.

Don Landoll founded the Landoll Corporation in Marysville, KS in 1963. Mr. Landoll has taken a one-man welding, radiator, and blacksmith shop with 12,500 sq. ft. and turned it into a global leader in manufacturing with 800+ employees and over 960,000 sq. ft. under one roof. Mr. Landoll, President and Chairman, stays actively involved in the day-to-day activities of the company. He has four children: Paula, Pat (deceased), Phil, and Pam, with Paula and Phil working at the corporation. Mr. Landoll’s hard work and common sense leadership approach have grown Landoll Corporation to where it is today. Understanding that his hard work has paid off, Mr. Landoll has made the most of his opportunity to give back!

The Don Landoll philanthropic activities span the past 50+ years and are far-reaching. Most notably, his work for St. Gregory the Great Catholic Parish and the recently-built Community Memorial Hospital in Marysville, KS. Mr. Landoll has not only been a significant financial donor in all the projects, but also led the charge as leadership of the school remodel/new gym, new playground, and most recently, the chairman of the building committee for the new church and parish hall. The vision and leadership provided by Mr. Landoll has put the St. Gregory the Great award-winning campus on the map.

For these reasons, it is the honor and privilege of the Catholic Foundation of Northeast Kansas to present to Don Landoll the 2018 Deo Gratias Outstanding Catholic Individual Award.







2017 Winner  
**ECCE HOMO**  
**KATE MARIN**  
St. Francis, KS



# REGIONAL JURIED CHRISTIAN ARTS COMPETITION AND EXHIBITION

The Catholic Fine Arts Council of the Archdiocese of Kansas City in Kansas with the Catholic Foundation of Northeast Kansas hosted the first annual Regional Juried Christian Arts Competition and Exhibition with an opening/prize reception on October 17, 2017. 38 artists submitted 90 works to be juried by Denis R. McNamara, Ph.D.

Dr. McNamara is an architectural historian specializing in American church architecture and serves as a liturgical design consultant for the Liturgical Institute of the University of Saint Mary of the Lake/Mundelein Seminary.



**Denis R. McNamara, Ph.D.**  
Assistant Director, The Liturgical Institute  
Associate Professor, Art and Architecture

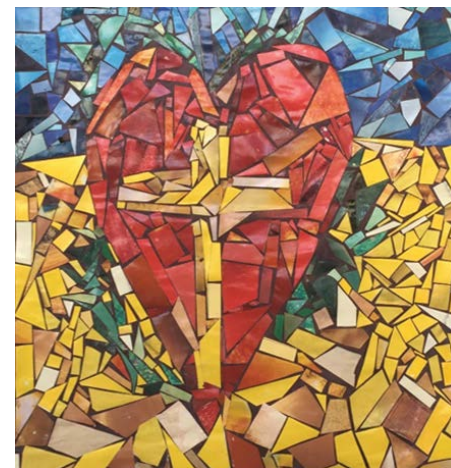
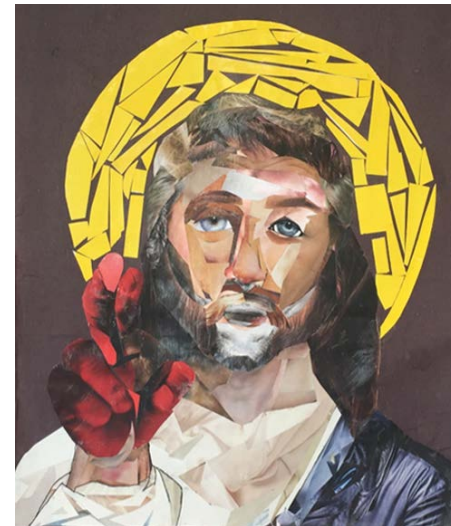


**John and Pat Menghini**  
Church of the Ascension - Overland Park  
Honorary Chairpersons

Please join us in a sincere 'thank you' to the talented artists who submitted their art work, especially the following winners.

- Pope St. John Paul II Award \$1,500 – Kate Marin, St. Francis, KS - "Ecce Homo" *(opposite page)*
- St. Bede Award \$500 - Peggy Shopen, Lawrence, KS - "King David" *(top of this page)*
- St. Luke Award \$500 & People's Choice Award \$200 – Jason Jenicke, Alexandria, KY - "Pieta" *(second from top of this page)*
- St. Thomas the Apostle Award \$250 – Dan Dakotas, DE Soto, KS - "Suffering Face of Christ" *(third from top of this page)*
- St. Cecilia Award \$250 - Oscar Alonzo, Overland Park, KS - "Mary's Presence" *(bottom of this page)*





# 5<sup>TH</sup> ANNUAL ARCHBISHOP'S HIGH SCHOOL ART EXHIBIT

The Catholic Fine Arts Council, established by the Catholic Foundation of Northeast Kansas in 2009, helps to promote arts education, encourage historical preservation, and support Christian visual and performing arts, architecture, and writing throughout the Archdiocese of Kansas City in Kansas.

Judging was completed on February 22, 2018 by Eva Reynolds and Fr. Gerard Alba. Please join us in a sincere 'thank you' to the teachers and parents of the talented students who submitted their art work, especially the following winners.

## Archbishop's Choice – \$100

"Saint Rose of Lima" by Alma Mejia, Bishop Miege High School (*top left*)

## Superintendent's Choice – \$100

"Jesus Collage" by Jonathan Whorton, Maur Hill-Mount Academy (*top right*)

## Juror's Choice – \$100

- "The Thorns of Sin" by Brooke Trompeter, Maur Hill-Mount Academy (*second from top*)
- "Be Still" by Garret Green, St. James Academy (*third from top*)
- "First Two Friends" by Renee Howard, Bishop Miege High School
- "Evangelii Gaudium" by Grace Peitsch, Maur Hill-Mount Academy
- "Dinner for Five Thousand" by Mavis Ding, Maur Hill-Mount Academy

## Popular Choice – \$100

"His Mighty Hand" by Caroline Gatschet, Hayden Catholic High School (*bottom right*)

30<sup>TH</sup> ANNIVERSARY PILGRIMAGE – OCTOBER 18-28, 2019

# A PILGRIMAGE TO THE HOLY LAND

The Holy Land, often referred to as the fifth Gospel, offers the Catholic pilgrim an unparalleled spiritual opportunity. Our tentative schedule is that we will spend five nights in Jerusalem. We will visit Bethlehem, the Baptismal site at the Jordan River, the Judean hills of the Visitation, and trace Jesus' steps through all the events of Holy Week. We will also spend three nights on the shore of the Sea of Galilee, the region in which Jesus spent most of His public ministry. We will visit the home of the Holy Family in Nazareth, renew our wedding vows in Cana, and meditate on the Eucharist in the synagogue at Capernaum.

In each holy place, Mike Scherschligt, Catholic theologian and School of Faith Director, will present a compelling encounter with Our Lord Jesus to make our faith relevant and dynamic today. His Excellency, Archbishop Joseph F. Naumann, Archbishop of the Archdiocese of Kansas City in Kansas, will celebrate daily Mass. Your prayer life and participation in the Mass will never be the same after this pilgrimage.

For more information about the Holy Land Pilgrimage, please contact Trinity Travel, Rich and Trudy Boynton at 913-422-4141.

*Highlights of our pilgrimage will include daily Mass with Archbishop Joseph F. Naumann and Scripture teachings & spiritual reflections by Mike Scherschligt.*

*\*Pilgrimage photos courtesy of Trinity Travel, Rich and Trudy Boynton*







# PROFESSIONAL ADVISORS & CONTINUING EDUCATION PROGRAM

The Catholic Foundation of Northeast Kansas, through the Continuing Education Program, has established a group of Professional Advisors within the Archdiocese of Kansas City in Kansas. These individuals connect through business opportunities, while sharing the same Catholic beliefs and values. It has been beneficial for these professionals to hear from knowledgeable speakers in their industry on topics with a Catholic perspective

in mind at our Continuing Education Program held each year. In June of 2018, the Catholic Foundation of Northeast Kansas put on its ninth Continuing Education Program. In the last nine years, we have awarded continuing education credits to nearly 500 attendees. We encourage you to join this professional Catholic community to network with like-minded individuals, and to better serve your current and potential clients.

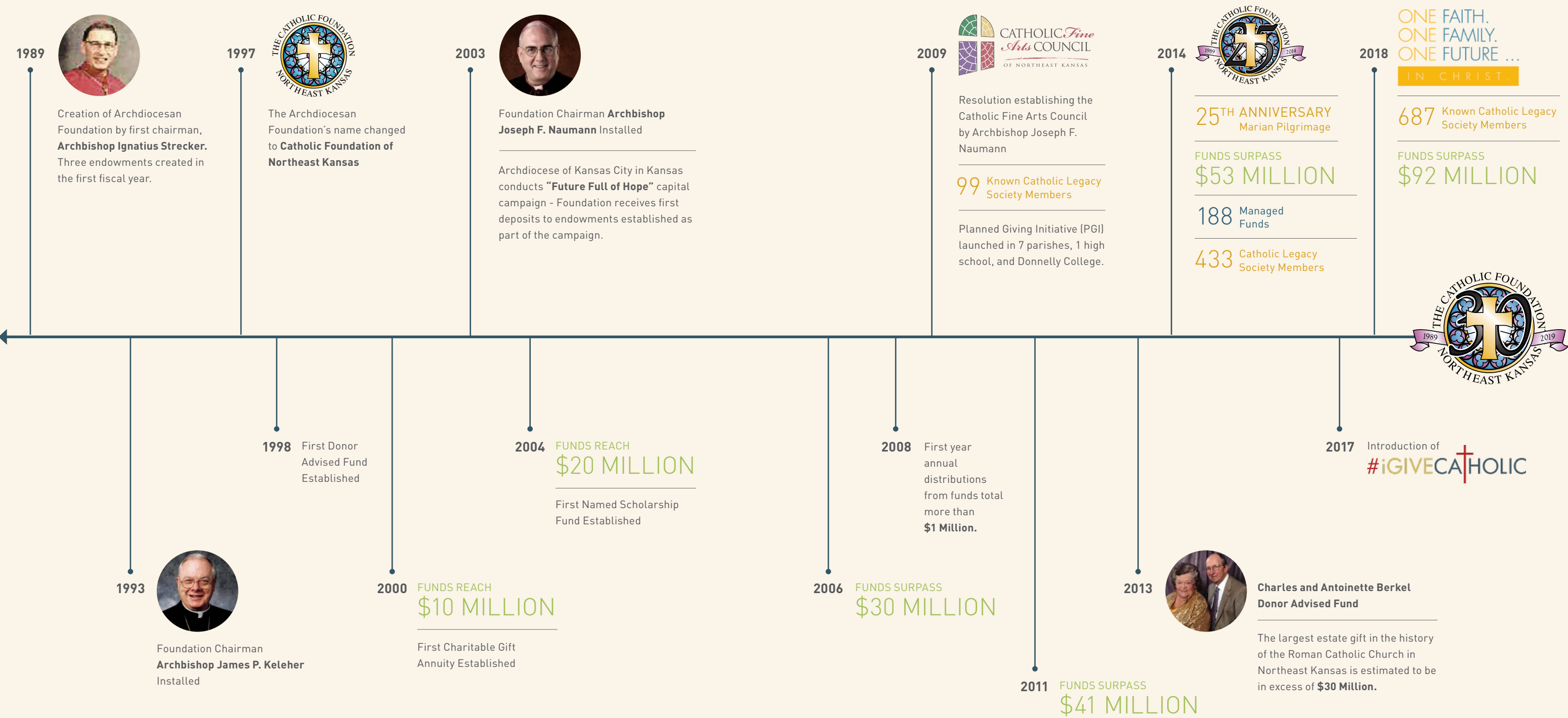
In the last nine years, continuing education credits have been awarded to nearly 500 attendees.

If you have interest in joining the Professional Advisors Group, please call 913-647-3062.





# 30 YEARS IN THE MAKING





Catholic Foundation of Northeast Kansas Board of Directors



**Archbishop Joseph F. Naumann**  
Chairman  
Cathedral of St. Peter  
Kansas City



**Shirley M. Antes**  
Secretary, Planned Giving Chair  
Sacred Heart  
Emporia



**Joe H. Bunck**  
Board Member  
St. Leo  
Horton



**John L. Caton**  
President  
St. Ann  
Prairie Village



**Father John A. Riley**  
Ex Officio  
Chancellor



**Larry Ryan**  
Board Member  
Holy Trinity  
Lenexa



**Michael R. Shirley**  
Board Member  
Church of the Nativity  
Leawood



**Douglas G. Ciocca**  
Investment Chair  
Church of the Nativity  
Leawood



**Amy Goode**  
Board Member  
Immaculate Conception  
Louisburg



**William F. Hess**  
CE Program Chair  
Sacred Heart  
Shawnee



**Bernard J. Hickert**  
Marketing Chair  
St. Matthew  
Topeka



**Daniel J. Stalp**  
Past President  
Prince of Peace  
Olathe



**Edward Trompeter**  
Board Member  
St. Benedict  
Atchison



**Kevin Tucker**  
Board Member  
Most Pure of Heart of Mary  
Topeka



**Jeff Jaworski**  
Board Member  
Curé of Ars  
Leawood



**Leslie M. Knop**  
Ex Officio  
Holy Trinity  
Paola



**Troy L. Kuhn**  
Board Member  
St. Michael the Archangel  
Leawood



**Donald L. Lueger**  
Board Member  
St. Mary  
St. Benedict



**Jonathan J. Twidwell**  
Vice President  
Holy Trinity  
Lenexa



**Sharon Weems**  
Board Member  
Church of the Ascension  
Overland Park



**Ann Martin**  
Board Member  
Holy Spirit  
Overland Park



**Stephen McBride**  
Treasurer, Finance Chair  
St. John Paul II  
Olathe



**Stephen Menke**  
Board Member  
St. John the Evangelist  
Lawrence



**Carla K. Mills**  
Ex Officio  
St. Pius X  
Mission

CFNEK PAST  
PRESIDENTS

- 2017 - 2018  
John Caton
- 2015 - 2016  
Dan Stalp
- 2013 - 2014  
Larry Buessing
- 2011 - 2012  
Larry Strecker
- 2009 - 2010  
Russel Jenkins
- 2007 - 2008  
Ken Mellard
- 2005 - 2006  
Mark McKinzie
- 2003 - 2004  
Jody Olberding
- 1994 - 2002  
Archbishop James Keleher
- 1989 - 1993  
Archbishop Ignatius Strecker

STAFF

- Left to Right
- Nebyu Tilahun**,  
Controller
  - Beth Lopez**,  
Operations Coordinator
  - Leslie M. Knop, CFRE**  
Executive Director
  - Kathryn Robards**,  
Marketing Coordinator







## Financial Information

2000 – FUNDS REACH  
**\$10 MILLION**

2004 – FUNDS REACH  
**\$20 MILLION**

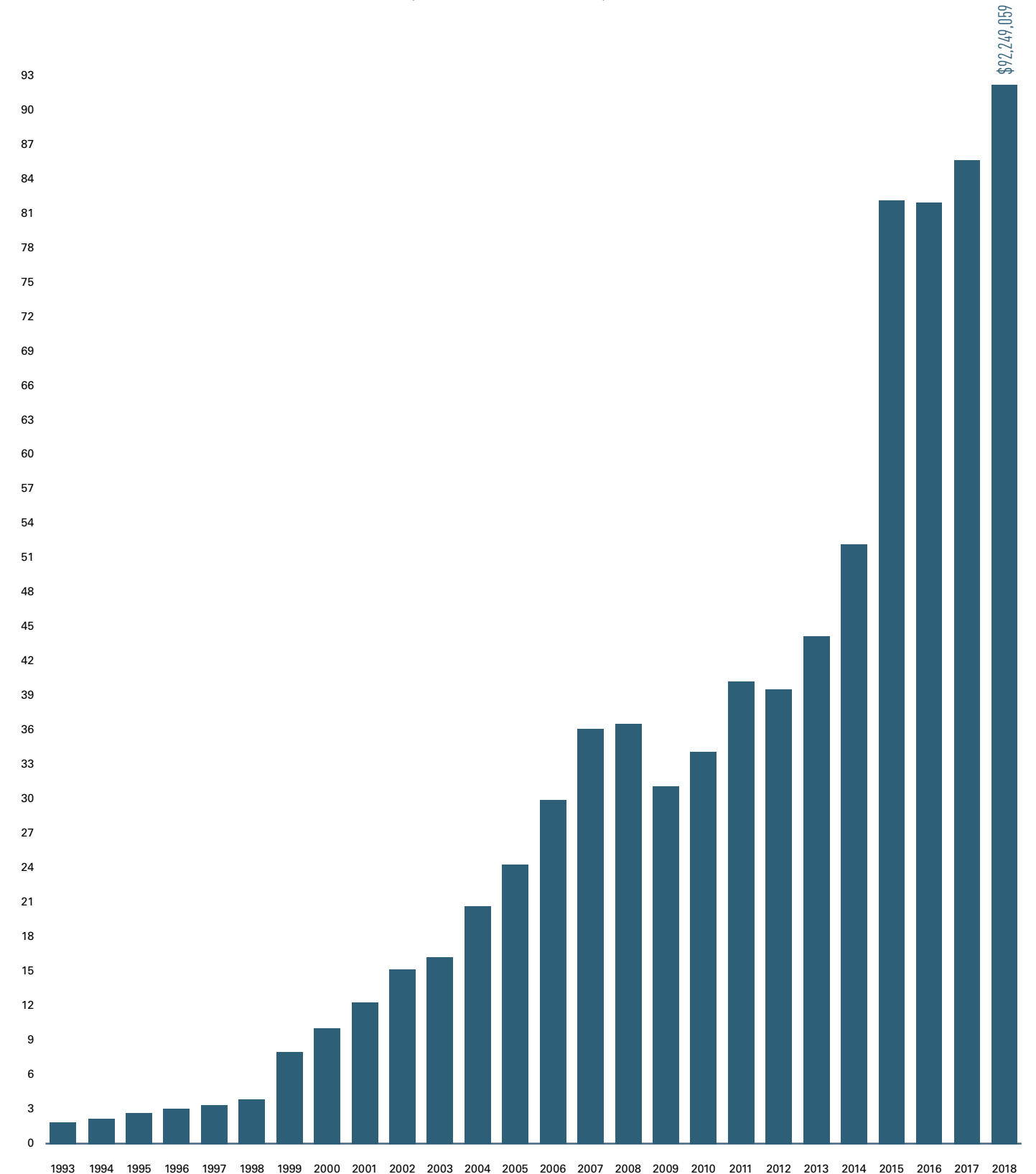
2006 – FUNDS SURPASS  
**\$30 MILLION**

2014 – FUNDS SURPASS  
**\$50 MILLION**

2015 – FUNDS SURPASS  
**\$80 MILLION**

2018 – FUNDS REACH  
**\$92 MILLION**

Asset Growth 1993-2018  
(Dollars in Millions)





Statement of Financial Position

June 30, 2018, 2017, and 2016

	2018	2017	2016
<b>Cash</b>	<b>\$87,894</b>	<b>\$1,000,495</b>	<b>\$302,378</b>
<b>Investments</b>			
Archdiocesan Deposit and Loan	49,299	341,432	596,206
Managed Funds	77,139,134	69,286,966	64,381,691
Total Current Assets	\$77,276,327	\$70,628,892	\$65,280,275
<b>Promissory Note Receivable</b>	<b>18,133,370</b>	<b>18,998,028</b>	<b>19,628,126</b>
Present Value Discount on Promissory Note	(3,226,650)	(3,563,620)	(3,821,697)
Present Value Promissory Note	14,906,720	15,434,408	15,806,429
<b>Prepaid Expense</b>	<b>-</b>	<b>-</b>	<b>1,461</b>
<b>Account Receivable</b>	<b>151</b>	<b>-</b>	<b>-</b>
<b>Fixed Assets</b>			
House Gift	-	130,000	-
Computer Software	21,529	21,529	21,529
Accumulated Depreciation	(21,529)	(21,529)	(21,529)
Total Fixed Assets	-	\$130,000	-
<b>Reinsured Gift Annuity Contracts</b>	<b>65,861</b>	<b>69,188</b>	<b>74,231</b>
<b>TOTAL ASSETS</b>	<b>\$92,249,059</b>	<b>\$86,262,488</b>	<b>\$81,162,396</b>
<b>Liabilities</b>			
Accounts Payable	\$2,277	\$32,525	\$8,977
Deferred Fee Income - Reinsured Gift Annuities	7,346	8,780	10,216
Annuities Payable	219,051	168,376	192,062
Due to Resource Providers	33,977,588	30,149,938	27,503,027
Total Liabilities	\$34,206,262	\$30,359,619	\$27,714,282
<b>Net Assets</b>			
Unrestricted			
- Undesignated	470,535	505,203	349,484
- Donor Advised	2,134,433	998,833	818,175
- Donor Advised Berkel	23,782,703	24,446,814	25,689,635
Temporarily Restricted - Investment Income	1,955,326	1,192,676	(80,635)
Temporarily Restricted - Endowments	990,383	1,000,383	1,000,383
Permanently Restricted - Endowments	28,709,417	27,758,959	25,671,072
Total Net Assets	58,042,797	\$55,902,869	\$53,448,114
<b>TOTAL LIABILITIES &amp; NET ASSETS</b>	<b>\$92,249,059</b>	<b>\$86,262,488</b>	<b>\$81,162,396</b>

Fund Activity

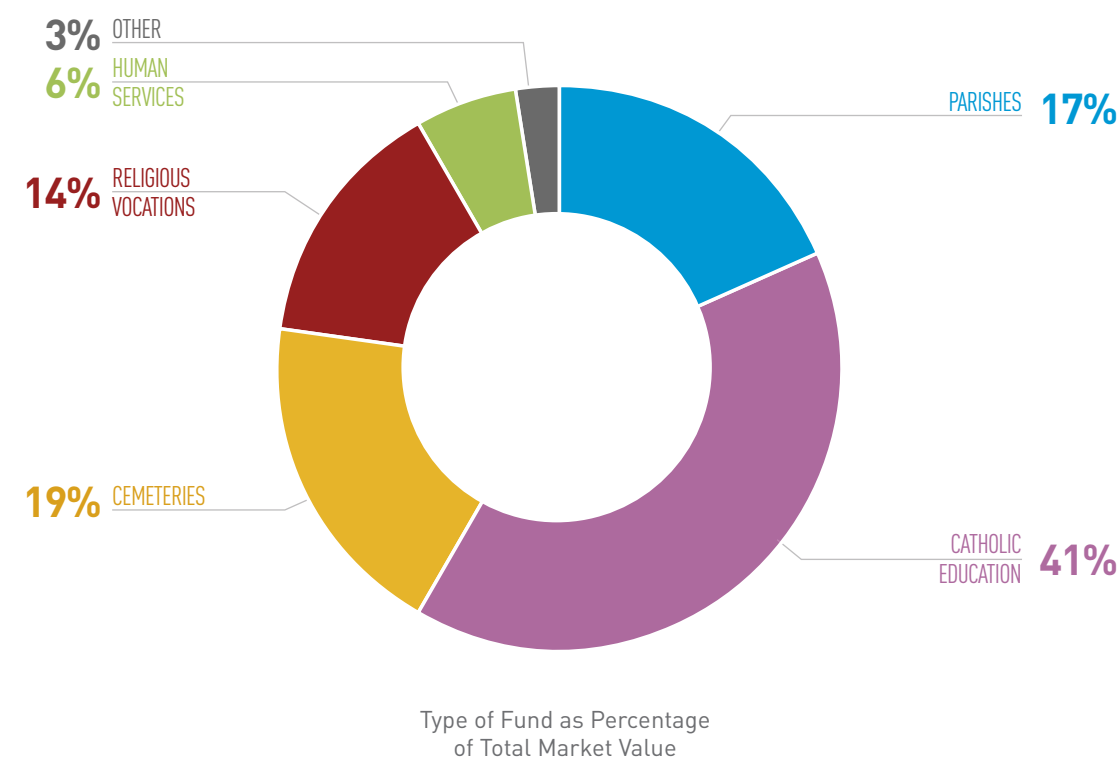
For the Years Ended June 30, 2018, 2017, and 2016


	2018	2017	2016
<b>Beginning Market Value</b>	<b>\$85,646,791</b>	<b>\$80,719,489</b>	<b>\$81,342,175</b>
<b>Additions</b>			
Endowments & Funds	4,205,483	2,953,850	3,486,581
Donor Advised Funds	1,813,988	385,381	4,881,673
Charitable Gift Annuities	119,600	59,600	9,600
Total	\$6,139,071	\$3,398,831	\$8,377,854
<b>Withdrawals</b>			
Endowments & Funds	(768,506)	(534,618)	(246,721)
Donor Advised Funds	(1,946,584)	(1,736,663)	(6,821,566)
Charitable Gift Annuities	(72,088)	(85,251)	(79,543)
Total	\$(2,787,178)	\$(2,356,532)	\$(7,147,830)
<b>Net Income(Loss) - Int, Div, Real/Unreal G(L) Net Fees</b>			
Endowments & Funds	3,762,584	4,912,084	(857,965)
Donor Advised Funds	1,175,630	1,157,331	708,882
Charitable Gift Annuities	6,490	7,008	(10,184)
Total	\$4,944,704	\$6,076,423	\$(159,266)
<b>Distribution of Income</b>			
Endowments & Funds	(1,668,803)	(1,323,206)	(1,323,334)
Berkel Donor Advised Funds	(571,545)	(868,213)	(370,111)
Total	\$(2,240,348)	\$(2,191,420)	\$(1,693,445)
<b>Net Activity</b>	<b>\$6,056,249</b>	<b>\$4,927,302</b>	<b>\$(622,687)</b>
<b>Ending Market Value</b>	<b>\$91,703,040</b>	<b>\$85,646,791</b>	<b>\$80,719,488</b>
<b>Reconciliation with Statement of Financial Position</b>			
Accounts Payable	\$2,277	\$32,525	8,977
Deferred Fee Income - Reinsured Gift Annuity	7,346	8,781	10,216
Annuities Payable - Reinsured	65,861	69,188	74,231
CFNEK - Undesignated Fund	470,535	505,203	349,484
<b>TOTAL LIABILITIES &amp; NET ASSETS</b>	<b>\$92,249,059</b>	<b>\$86,262,488</b>	<b>\$81,162,396</b>



Fund Balance

[For the Period Ended June 30, 2018]

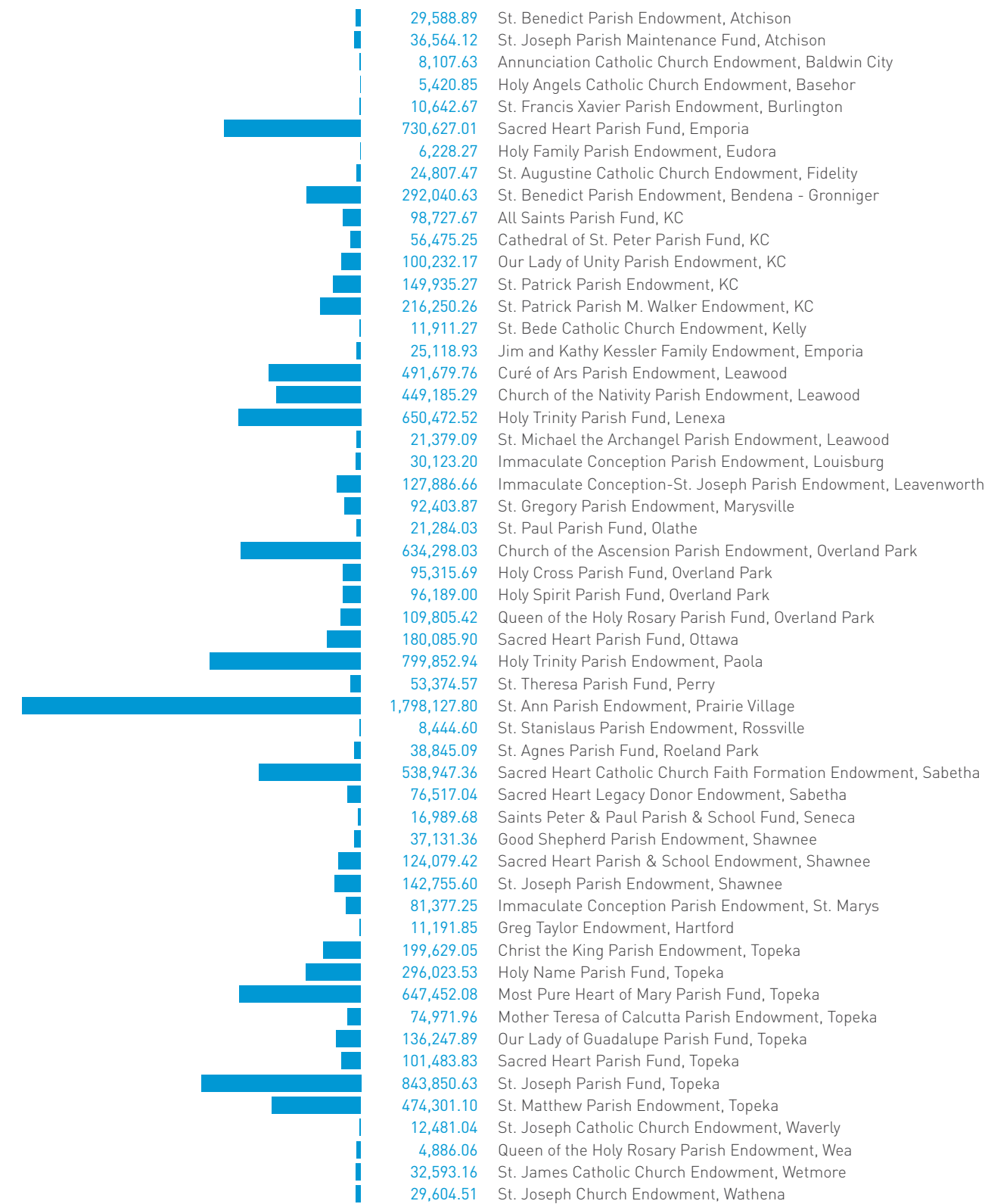


Type of Fund	Market Value	% of Mkt Value	# of Funds
1 Parishes	\$11,383,946.22	17%	54
2 Catholic Education	\$27,028,853.18	41%	62
3 Cemeteries	\$12,386,298.34	19%	18
4 Religious Vocations	\$9,476,327.32	14%	7
5 Human Services	\$3,808,219.84	6%	10
6 Other	\$1,549,069.96	3%	4
 Total Endowments & Funds	\$65,632,714.86	100%	155
Total Endowments & Funds	\$65,632,714.86	71.57%	155
7 Donor Advised Funds	\$25,917,136.21	28.26%	30
8 Charitable Gift Annuities	\$153,189.80	0.17%	9
TOTAL	\$91,703,040.87	100%	194

We practice prudent, faithful investment. Funds are monitored and managed with the counsel of the CFNEK Finance Committee in accordance with socially responsible precepts. We do not invest in companies whose products or goals are in conflict with the basic tenets of Roman Catholic doctrine.

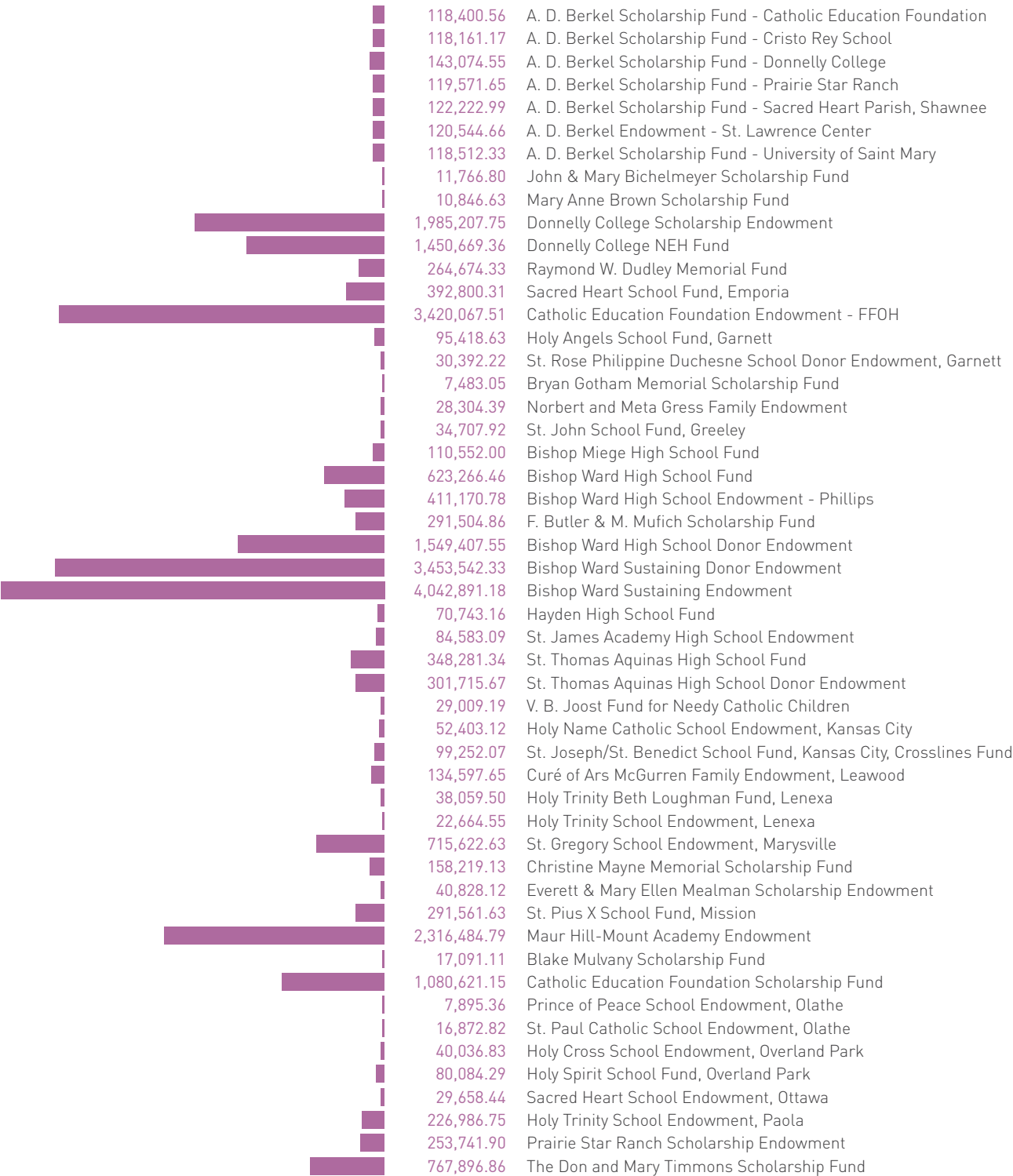


**How Parish Endowments and Funds Strengthen Catholic Communities** | The Catholic Foundation of Northeast Kansas currently has 54 parish funds. This year, these funds received new deposits of \$558,365.01 and have distributed \$181,054.99 to parishes to meet current obligations and provide new programs. The benefits of a perpetual stream of income that increases over time, with additions and growth, will have a profound impact on parish finances and programs for generations to come (sorted by city).





**How Endowments and Funds Benefit Youth |** The 62 funds supporting Catholic education received additions of \$2,696,126.70 and made distributions of \$834,366.33. Catholic education continues to be one of the most important but challenging aspects of the Catholic Church. We are called to share our faith with others and pass it on to the next generation. Catholic education funds support inner-city and rural Catholic schools, provide scholarship funds that support elementary and high schools, and provide support to Donnelly College, the St. Lawrence Catholic Campus Center, and other campus ministries.



CATHOLIC EDUCATION

Teaching the Faith

45,390.88	Mary Sue Cosentino Camp Tekakwitha Scholarship Endowment
131,509.97	Fr. Tom Tank Prairie Star Ranch Scholarship Endowment
53,825.99	St. Ann School Donor Endowment, Prairie Village
23,709.37	St. Agnes School Fund, Roeland Park
138,248.65	Michelle Stueve Smith "Brave Heart" Scholarship Endowment
236,220.94	St. Lawrence Catholic Campus Center Endowment
4,105.29	Anita Striegel Scholarship Fund
12,798.91	The St. Leo Scholarship
15,841.92	Christ the King School Endowment, Topeka
62,285.03	St. Matthew School Endowment, Topeka
4,843.11	Queen of the Holy Rosary School Endowment, Wea



62

Education Funds

\$2,696,126

Contributions Received

\$834,366

Distributed From Funds

But Jesus said,  
“Let the children come to  
me, and do not prevent  
them; for the Kingdom of  
Heaven belongs to such  
as these.”  
– Matthew 19:14

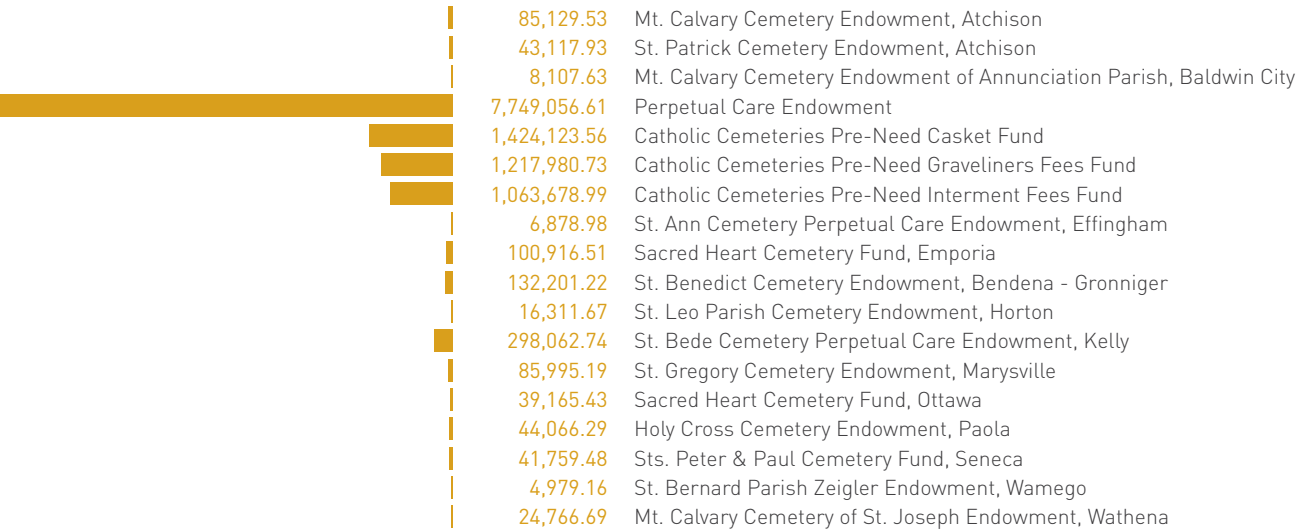




CEMETERIES

# Honoring Those Who Have Passed Into Eternal Life

**How Cemeteries Benefit From Endowments and Funds** | Perpetual care and support for Catholic cemeteries across the Archdiocese are provided in no small part by endowments and funds held by the Catholic Foundation of Northeast Kansas. The 18 funds that benefitted cemeteries received \$493,542.76 of additional funds and made distributions of \$141,605.61 during the last fiscal year to support the important mission of maintaining and providing upkeep of roads, mausoleum repairs, lawn and tree care, irrigation and irrigation equipment and replacement, and shrine maintenance and repair at parish cemeteries and those cared for by Catholic Cemeteries of Northeast Kansas.



RELIGIOUS VOCATIONS

# Holy Orders

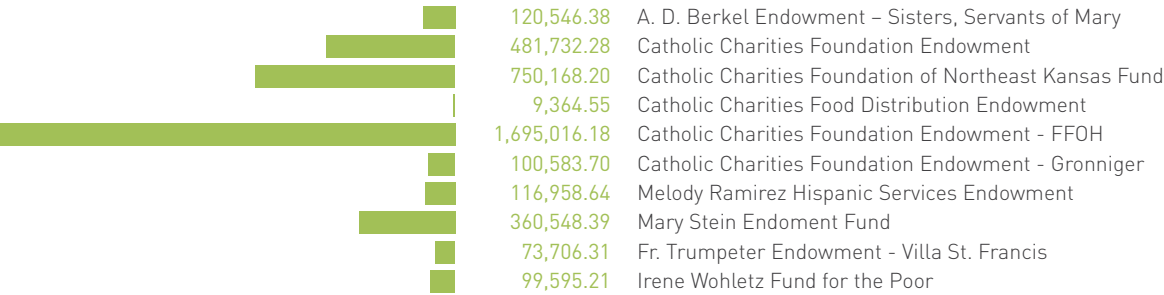
**How Religious Vocations Grow With Endowments and Funds** | The commitment to vocations at the Archdiocese is helped by seven funds that provided more than \$355,518.48 in distributions for vocations. Religious Vocations Funds received \$20,060.00 in new deposits. The need to educate and train clergy is significant and requires continued support from the Archdiocese. This commitment to vocations provides Catholics access to the Mass, the sacraments and pastoral care. It continues to be a great responsibility for the Church to provide the needed funding for priestly formation and training, now, and into the future.



HUMAN SERVICES

# When Were You Hungry, Thirsty, Naked, or Imprisoned

**How Human Service Endowments and Funds Benefit the Needy** | Human service organizations across the Archdiocese of Kansas City in Kansas were supported last year by more than \$96,667.04 in distributions and \$436,388.20 in additions to ten funds that were created and grown by generous contributions from people touched by the support that these organizations provide. From funds to benefit Catholic Charities and Villa St. Francis, to the Irene Wohletz Fund for the Poor, human services funds help many of the most vulnerable in our communities.



OTHER FUNDS

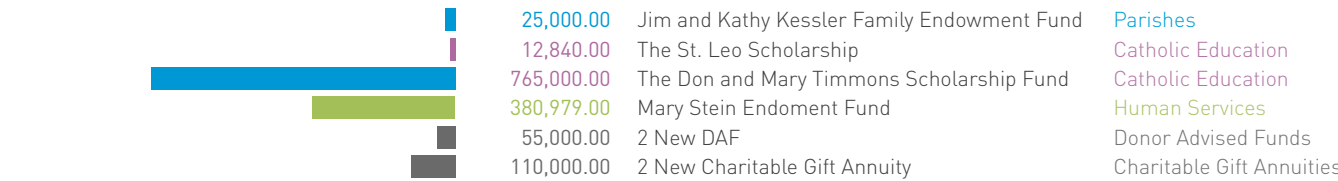
**How Other Funds Offer Convenient Management of Philanthropy** | A tool that has grown in popularity across the United States for those looking to plan their philanthropy has been the Donor Advised Fund. This year, the Foundation had 30 Donor Advised Funds and 9 Charitable Gift Annuities, which allow donors to conveniently manage their philanthropic gifts to Catholic organizations and other charities around the Archdiocese and across the country.

**How Other Endowments Benefit Cultural Outreach and Lay Ministry** | An endowed fund is a way of giving that creates a permanent, continuous source of income for the various ministries of the Roman Catholic Archdiocese of Kansas City in Kansas.

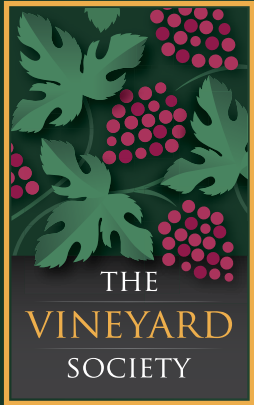


## New Funds in 2018

(Dollars Represent Initial Contribution to Establish Fund)







ARCHBISHOP'S  
CALL TO SHARE

There are many ways to share your gifts and experience the abundant joy that comes from bringing others to Christ. Members of the Vineyard Society demonstrate their commitment to a stewardship lifestyle by providing for others, both now and in the future. A commitment of any amount to the Archbishop's Call to Share appeal at death qualifies you as a member of the both the Vineyard Society and the Catholic Legacy Society, and will enable others to reach out in service of those in need.

# CATHOLIC LEGACY SOCIETY

The Catholic Legacy Society recognizes individuals who have included their parish and/or another institution of the Archdiocese in their estate plan. You can join the following members of the Catholic Legacy Society to build a lasting foundation of financial support. We assist individuals and organizations to establish endowments or funds to support the educational, religious, and charitable ministries of the Church, while providing the security that their gift will be used exactly as they intend. Catholic organizations may benefit as beneficiaries of gift annuities, trusts, insurance, and retirement plans. To learn more, call the Catholic Foundation of Northeast Kansas at **913.647.3062** or email **cfnek@archkck.org**.

Mr. Douglas Adair  
Mr. Glenn Adamson  
Mr. and Mrs. Robert Alden  
Mr. and Mrs. Michael T. Alex  
Dr. Lelia H. Alexander  
Mrs. Loretta M. Allebach  
Mrs. Velma Andrisevic  
Mr. and Mrs. Carl Antes  
Mr. and Mrs. Joseph V. Arnold  
Mr. and Mrs. Christopher G. Arth  
Mr. and Mrs. Donald Arth  
Mrs. Gwen Aylward  
Mr. and Mrs. Robert Bacic  
Mr. and Mrs. James T. Baldwin  
Mr. and Mrs. Stephen M. Barthol  
Mr. and Mrs. Ray Barthuly  
Ms. Marsha K. Basey  
Mr. and Mrs. Paul Bastasch  
Ms. Mary Pat Beals  
Mr. and Mrs. Robert Beaman  
Mr. and Mrs. Richard A. Bendis, Sr.  
Mr. and Mrs. Roger A. Berg, Jr.  
Mr. and Mrs. Eugene J. Bertels  
Dr. and Mrs. Frank G. Bichlmeier  
Mr. and Mrs. Thomas J. Bickimer  
Mr. and Mrs. Bryan E. Biggs  
Mrs. Esther M. Bizal  
Mr. Robert Blakesley  
Mr. William R. Bockelman  
Ms. Cheryl A. Cook Boushka  
Mr. Frank Bowers  
Mr. and Mrs. Kirk C. Bradford  
Ms. Martha Brady  
Mrs. Genevieve Brandmeyer  
Mr. and Mrs. Steven Braun  
Mr. William J. Braun  
Mr. and Mrs. Frank Brentine  
Mrs. Maxine Breuel  
Ms. Ludgarde Broucke  
Ms. Criss Brown  
Mr. and Mrs. Don Brown

Mr. and Mrs. Kent P. Brown  
Father William M. Bruning  
Mr. John Brunski  
Mr. and Mrs. Steve Buche  
Mr. and Mrs. Brian Buckley  
Mr. and Mrs. Larry J. Buessing  
Mr. and Mrs. Joe H. Bunc  
Mr. Joe Carmichael  
Mr. and Mrs. Roy D. Carroll  
Mr. and Mrs. William C. Carter  
Dr. Alberto R. Castaneda  
Mr. and Mrs. John L. Caton  
Mr. and Mrs. Thomas Cavaliere III  
Mr. Patrick S. Cavanaugh  
Mrs. Micki Christian  
Mr. Bill Clarkson, Sr.  
Father Barry Clayton  
Mrs. Beverly Clemens  
Mr. and Mrs. Robert E. Clune  
Mr. and Mrs. Kenneth Combes  
Mr. and Mrs. Andrew H. Comstock  
Ms. Karen Conklin  
Mrs. Joan Cooper  
Mr. John T. Courtney  
Deacon and Mrs. David Cresswell  
Mr. and Mrs. Matthew S. Crowley  
Mrs. Corinne P. Culp  
Mr. and Mrs. Robert A. Cunningham, Sr.  
Mr. and Mrs. Michael Czinege  
Ms. Julie D'Agostino  
Mr. and Mrs. Douglas D. Dean  
Mr. Richard C. Deitchman  
Mr. and Mrs. Romano DeMarco  
Mr. John J. Dempsey  
Ms. Judy Desch  
Mr. and Mrs. Rolland A. Dessert, Jr.  
Ms. Dorothy Dieker  
Mr. and Mrs. Christopher D. Dierks  
Mr. and Mrs. Michael Doerfler  
Mr. and Mrs. Richard J. Doran  
Mr. and Mrs. Daniel Downey

Mr. and Mrs. Jerry Drew  
Mr. Harry Duckers, Jr.  
Mr. and Mrs. Bernard Dunn  
Mr. and Mrs. Terrence P. Dunn  
Mr. and Mrs. William H. Dunn, Sr.  
Mrs. Carol A. Eichman  
Mr. and Mrs. Mark W. Ellington  
Mr. and Mrs. Jeff Englert  
Mrs. Judy Estes  
Mr. and Mrs. Ray D. Evans  
Mr. and Mrs. Timothy J. Evans  
Ms. Margaret M. Fay  
Mr. and Mrs. Robert Fernholz  
Mrs. Julia Fette  
Ms. Tana R. Field  
Mrs. Ruth Fink  
Mr. and Mrs. Jack Fiorella  
Mr. and Mrs. William Fleming  
Mr. and Mrs. John M. Flynn  
Mr. Donald Foley  
Mr. Jerry Fox  
Mr. and Mrs. Kevin Fox  
Mr. and Mrs. Derek Franklin  
Mr. and Mrs. Frank E. Franko  
Mr. and Mrs. Chuck G. Frazier  
Mr. and Mrs. Robert Frazier  
Mr. and Mrs. Louis Funk  
Mr. and Mrs. Michael G. Gangel  
Mrs. Edith Gast  
Ms. Amy Gattermeir  
Mr. and Mrs. Peter Gattermeir  
Mr. and Mrs. Sean Gellhaus  
Mrs. Elida A. Gibbons  
Mr. James E. Glick  
Mr. and Mrs. Eric E. Gonzalez  
Mrs. Joann Grady  
Mr. and Mrs. Gerald E. Gregory  
Mr. Quinlan Halbeisen  
Mr. and Mrs. Kenneth Harris  
Mr. and Mrs. Mark Hegarty  
Mr. and Mrs. Edward A. Herman, Jr.  
Father Michael Hermes  
Mr. and Mrs. John Herriage  
Mr. and Mrs. Roger R. Herting  
Mr. and Mrs. Bernard J. Hickert  
Mr. J. Thurman Hiller  
Mr. and Mrs. Tony Hodel  
Mr. Earl Hoehn  
Mr. and Mrs. Michael Hoehn  
Mr. and Mrs. Lyle F. Holthaus  
Mr. and Mrs. Don L. Horine, Jr.  
Mr. James B. Horner  
Mr. Burton Huerter  
Mr. and Mrs. Jeff Humburg  
Mr. and Mrs. William F. Hund  
Miss Virginia Irvine  
Mr. and Mrs. William R. Jackson, Jr.  
Mr. and Mrs. Bernard Jacquinot  
Mr. and Mrs. Chuck Jansen  
Mr. and Mrs. Russell D. Jenkins  
Mr. and Mrs. Ken H. Jennison  
Mr. and Mrs. Rick Jones  
Dr. and Mrs. Michael Jurkovich  
Mr. Henry Keenan  
Archbishop Emeritus James P. Keleher  
Mr. and Mrs. David G. Kelley  
Mr. and Mrs. James R. Kessler  
Mr. and Mrs. Fred Kipp

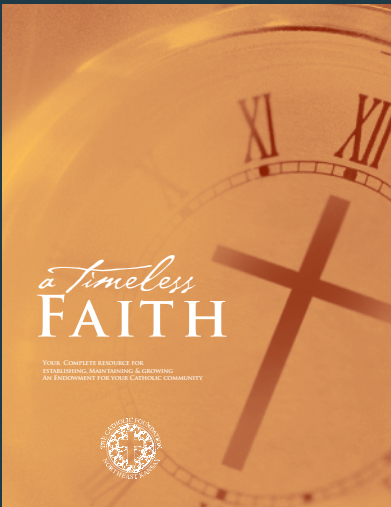
Father George Klasinski  
Mr. Dennis F. Klumpe  
Mr. and Mrs. Doug Knop  
Mr. and Mrs. David M. Knopke  
Ms. Carole Kobets  
Mr. and Mrs. Albert J. Kolarik  
Ms. Cecilia M. Koller  
Mr. and Mrs. Frederick Kouri  
Mr. Anthony Kovach  
Mr. and Mrs. James R. Kowalewski  
Mr. and Mrs. Martin D. Krebs  
Monsignor Vincent Krische  
Mr. Timothy Kruse  
Mrs. Janet R. Kunz  
Mr. and Mrs. Steve Lacy  
Mr. and Mrs. George Lahood  
Mr. and Mrs. William Lammers  
Mr. and Mrs. David Lamott  
Mr. John W. Lardner  
Mr. and Mrs. John R. Latenser  
Mr. and Mrs. Mel Lavery  
Mr. and Mrs. Cletus Legleiter  
Mr. and Mrs. Travis Lindsay  
Mr. and Mrs. Jeffrey A. Lipp  
Ms. Agatha Little  
Father Ronald Livojevich  
Mr. and Mrs. James J. Lock  
Mr. and Mrs. David Long  
Ms. Mary P. Losik  
Father James E. Ludwikoski  
Mr. and Mrs. Donald L. Lueger  
Mrs. Jacqueline A. Madden  
Mr. and Mrs. William Maloney  
Mr. and Mrs. Cletus Manhart  
Mrs. Linda March  
Mr. and Mrs. John R. Martin  
Mr. Robert J. Masson  
Mr. and Mrs. Steven Maurer  
Mrs. BeaMarie Mayer  
Mr. and Mrs. Jerry Mayne  
Mr. and Mrs. Patrick D. McAnany  
Mr. and Mrs. Louis J. McAvoy  
Mr. and Mrs. Stephen E. McBride  
Ms. Barbara J. McCauley  
Mrs. Frances McEvoy  
Mr. and Mrs. David A. McFarlane  
Mr. J. Kenneth McGarity  
Mr. Larry W. McManus  
Ms. Beverly McQuilkin  
Dr. Juanito Melendres  
Mr. and Mrs. Kenneth M. Mellard  
Mr. and Mrs. John L. Menghini, Jr.  
Mr. and Mrs. John L. Menghini, Sr.  
Mr. and Mrs. Stephen A. Menke  
Mr. and Mrs. William G. Mergenmeier  
Mr. and Mrs. Walter L. Mersmann  
Mr. and Mrs. Brian Meyer  
Mr. and Mrs. George E. Miller  
Mr. Ronald Miller  
Mr. Scott Miller and Ms. Leslie Gordon  
Mr. and Mrs. Will A. Miller  
Ms. Carla K. Mills  
Mr. and Mrs. Michael J. Mistler  
Mrs. Norma L. Mitchell  
Mr. and Mrs. Robert Mogren  
Mr. and Mrs. Robert L. Mogren  
Mr. and Mrs. Freddie Montalvo  
Mr. and Mrs. William Moon

Mrs. Rita J. Muckenthaler  
Monsignor Michael Mullen  
Mr. and Mrs. Jon Murray  
Mrs. Marilyn J. Murray  
Mr. and Mrs. William E. Myers  
Mr. and Mrs. Frank Natchez  
Mr. and Mrs. John Nauman  
Mr. and Mrs. Steven Naylor  
Mr. and Mrs. Wayne Nichols  
Mr. and Mrs. Van Nine  
Mr. and Mrs. Dick Nixon  
Mrs. Mary Lou Novak  
Mr. and Mrs. William F. O'Neill  
Mr. and Mrs. Douglas R. Ondick  
Mr. and Mrs. Robert Ortiz, Jr.  
Mr. and Mrs. James J. Owens  
Mr. and Mrs. Robert D. Patterson  
Ms. Emily C. Pearson  
Mr. and Mrs. Eugene S. Peck  
Ms. Matilda A. Petesch  
Mr. and Mrs. William Phillips  
Mr. and Mrs. William J. Pierce  
Mr. and Mrs. James Piero  
Mrs. Wilma Plake  
Mr. and Mrs. Michael J. Podrebarac  
Mr. and Mrs. Michael D. Pollock  
Mr. and Mrs. Eugene J. Pope  
Ms. Cheryl Portwood  
Drs. Abraham K. and Mari Poulouse  
Mr. and Mrs. Gary E. Pratt  
Dr. James B. Pretz  
Mr. and Mrs. George E. Prochaska  
Mr. and Mrs. Doug Propeck  
Mrs. Pauline Rahija  
Mrs. Rachel L. Reiber  
Mr. and Mrs. David R. Richardson  
Father John A. Riley  
Mr. and Mrs. Manuel Rios  
Ms. Anna Ritz  
Mr. and Mrs. Malcolm E. Robinson  
Ms. Sally Roglin  
Mr. and Mrs. Alfred G. Rolf  
Mr. and Mrs. Charles Ronnau  
Mrs. Sue Roth  
Mr. and Mrs. Larry D. Ryan  
Mr. and Mrs. Frank C. Sabatini  
Mr. and Mrs. Richard J. Sahlfeld  
Mr. and Mrs. Mark Savner  
Mr. and Mrs. Paul Scaletty  
Mr. and Mrs. Michael Scheopner  
Father Brian A. Schieber  
Mr. and Mrs. Mark A. Schieber  
Father Matthew Schiffelbein  
Mrs. Frances S. Schilling  
Mrs. Sandra K. Schmitz  
Mrs. Jane Schnellbacher  
Mr. Donald Schreiner  
Mr. and Mrs. Eugene Schreiner  
Mr. and Mrs. Warren Schriner  
Mrs. Patricia L. Schwin

Mr. Donald J. Seifert  
Mrs. Nancy Sharp  
Mr. Michael Shirley  
Mr. and Mrs. Jeff R. Shue  
Mr. and Mrs. John R. Simecka  
Ms. Linn A. Slater  
Reverend and Mrs. James E. Smith  
Mr. and Mrs. Larry Sowers  
Mrs. Charlotte Stack  
Mr. Don Stack  
Mr. and Mrs. Daniel J. Stalp  
Ms. Mary Lou Stein  
Ms. Susan Stone  
Mr. and Mrs. Ernest J. Straub III  
Mr. and Mrs. Larry M. Strecker  
Mrs. Jane M. Stucker  
Mr. and Mrs. Leo F. Stueve  
Father Patrick Sullivan  
Mr. and Mrs. John P. Suwalsky  
Mr. and Mrs. Thomas J. Sweeney  
Mr. and Mrs. Chris F. Talarico  
Monsignor Thomas G. Tank  
Ms. Patricia L. Tate  
Mr. and Mrs. David N. Theis  
Ms. Gloria Throne  
Mr. and Mrs. Daniel E. Tira  
Mr. and Mrs. Paul J. Tremonti  
Mr. and Mrs. Cheryl Portwood  
Mr. and Mrs. Jonathan J. Twidwell  
Mr. and Mrs. Ted Uhler  
Mr. and Mrs. Erwin J. Ulises  
Miss Katherine Vandeloo  
Mr. and Mrs. Ralph VanGoethem  
Ms. Patricia M. Verschelden  
Mrs. Peggy Verschelden  
Mr. James Voet  
Mrs. Judy D. Vohs  
Mr. and Mrs. Mike Waldeck  
Mr. and Mrs. David A. Wallsmith  
Mr. and Mrs. Ray Walsh  
Mr. and Mrs. Denton Walstrom  
Mr. and Mrs. Thomas L. Waris  
Mr. and Mrs. Douglas G. Waters, Jr.  
Mr. Joe Weber  
Mr. and Mrs. Sam L. Weems  
Miss Geraldine Weishaar  
Mr. and Mrs. Charles Wesonig  
Mr. and Mrs. Dave White  
Mrs. Esther White  
Mr. and Mrs. James Wilcox  
Mr. and Mrs. Les Wilkerson  
Mr. and Mrs. Steve D. Wilkinson  
Mr. and Mrs. James Wintz  
Mr. and Mrs. Michael Wollenziehn  
Miss Marion Young  
Mr. and Mrs. Thomas R. Zarda  
Mr. Edward Zender  
Mr. Herbert F. Ziegler, Jr.  
Mr. and Mrs. Eugene Zupanec  
Anonymous - 353

We regret any omissions or errors. Please notify the Catholic Foundation of Northeast Kansas if you have designated your parish or other Catholic organization in the Archdiocese of Kansas City in Kansas as a beneficiary of a bequest or other planned gift. Anonymous gifts are treated confidentially.





Launched in 2009 under the direction of Archbishop Joseph F. Naumann, the Planned Giving Initiative (PGI) provided resources for parishes, schools, and Catholic organizations across the Archdiocese of Kansas City in Kansas to build a culture of stewardship throughout life and beyond using endowments and planned gifts. Parishes and schools following CFNEK PGI guidelines see measurable increases in confirmed planned gifts. Since the PGI pilot year, more than 500 people joined the Catholic Legacy Society.

- PGI accomplishments in fiscal year ending June 30, 2018:**
- 10 new Catholic Legacy Society Members, an increase from 678 to 688
  - 1 new school endowment
  - 2 new parish endowments
  - 1 new human services endowment
  - 2 new charitable gift annuities
  - 2 new donor advised funds

PLANNED GIVING

# BUILDING GOD’S KINGDOM IN KANSAS ONE CATHOLIC LEGACY GIFT AT A TIME

The Catholic Foundation of Northeast Kansas would like to commend the participating parishes for their leadership in philanthropy. Since its inception in 2009, the Planned Giving Initiative has been introduced and established in 38 parishes or high schools in the Archdiocese of Kansas City in Kansas.

The purpose of this initiative was to help parishes and high schools provide for their long term financial needs with an additional focus on promoting planned giving in their community. The CFNEK helped the parishes and high schools establish and/or grow their fund, establish a legacy society, and implement an ongoing marketing plan for increased bequests and other planned gifts.

The ultimate goal of this effort was to instill a systematic and institutional focus on planned giving in parishes, schools and organizations by providing the tools to build a measurable and sustainable planned giving culture.

After each fiscal year, we awarded parishes and schools who accomplished new goals in regard to the Planned Giving Initiative. The Catholic Foundation of Northeast Kansas will soon celebrate its 30th Anniversary, and this year we want to celebrate all of our parishes and schools who have built a solid culture of Planned Giving in the Archdiocese of Kansas City in Kansas.

For more information about Planned Giving contact the CFNEK office at 913-647-3062 or [cfnek@archkck.org](mailto:cfnek@archkck.org).



Name	City	Endowment Established
Bishop Miega High School	Shawnee Mission	1998
Bishop Ward High School	Kansas City	1989
Catholic Charities of Northeast Kansas	Overland Park	1989
Church of the Annunciation	Baldwin City	2014
Church of the Ascension	Overland Park	2006
Church of the Nativity	Leawood	2005
Curé of Ars	Leawood	1993
Donnelly College	Kansas City	2007
Good Shepherd	Shawnee	2005
Holy Angels	Basehor	2016
Holy Angels	Garnett	1999
Holy Cross	Overland Park	1996
Holy Family	Eudora	2011
Holy Spirit	Overland Park	2003
Holy Trinity	Lenexa	2001
Immaculate Conception	St. Marys	2007
Immaculate Conception-St. Joseph	Leavenworth	2009
Maur Hill-Mount Academy	Atchison	2010
Most Pure Heart of Mary	Topeka	1990
Mother Teresa of Calcutta	Topeka	2009
Prince of Peace	Olathe	2010
Sacred Heart	Sabetha	2012
Sacred Heart	Shawnee	2007
Sacred Heart	Emporia	1989
St. Agnes	Roeland Park	1990
St. Ann	Prairie Village	1993
St. Augustine	Fidelity	2012
St. Bede	Kelly	2014
St. Benedict	Atchison	2009
St. Francis Xavier	Burlington	2010
St. Gregory the Great	Marysville	1996
St. James	Wetmore	2012
St. John the Baptist	Greeley	1999
St. Joseph	Waverly	2010
St. Matthew	Topeka	1991
St. Michael the Archangel	Leawood	2009
St. Paul	Olathe	2014
Sts. Peter and Paul	Seneca	1992

IN 2009

128  
CLS Members

166  
Funds/Endowments

IN 2018

38  
Participating Parishes  
or High Schools

688  
CLS Members

194  
Funds/Endowments



# ESTABLISH YOUR FAMILY'S LEGACY OF CHARITABLE GIVING

Establish your family fund now, then make recommendations for distributions over time to the Catholic Foundation of Northeast Kansas. The distributions will be made from the Foundation in the name of your DAF to the qualifying charities you recommend. The Foundation is your fund administrator. You may access your DAF reports online to see quarterly statements and make distribution requests.

Why is a Donor Advised Fund the Right Choice?

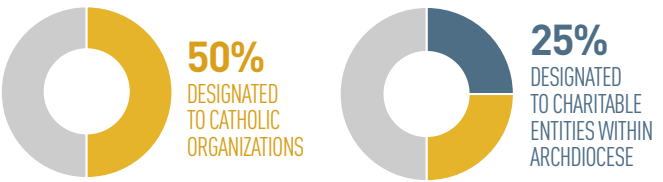
- **Financial Benefits:** Current tax deduction
- **Pressure-Free Giving:** Take your time in deciding which charities you want to receive your gift.
- **Save Time:** Simplify your philanthropy. Make gifts to your fund when you want, and let the Foundation handle the paperwork.
- **Lower Fees:** A DAF can be a low-cost alternative to a family foundation. The Foundation charges \$100 plus one percent of the fund's balance per year, assessed quarterly, to administer your fund.
- **Faithfully Invested and Distributed:** Socially Responsible Investing (SRI) screens ensure that your fund will be invested to reflect your Catholic values. Distributions are reviewed to protect you from unintentionally supporting charities that disagree with Catholic teaching.

A Donor Advised Fund (DAF) is a gift of at least \$5,000 with a not-yet-designated beneficiary. Make a difference in our Catholic community today and into the future, while teaching your family the value of establishing a lasting legacy.

Choose How You Do Good

A Donor Advised Fund gives you the freedom to decide how your gift will do good. In any calendar year, your fund may make distributions in amounts of \$100 or more that are:

At least *50 percent designated to Catholic organizations*, with a minimum of *25 percent of the total funds going to charitable entities* within the Archdiocese of Kansas City in Kansas. Up to *50 percent of the distributions may be designated to any non-Catholic qualified charity* in accordance with Catholic teaching.



Most importantly, a Donor Advised Fund allows you to focus on giving. We do the work to develop your fund and administer your gifts so your attention may be devoted to making a difference in the world.

Contact us today to learn more about establishing your Donor Advised Fund: 913.647.3062

# BENEFICIARIES OF DONOR ADVISED FUNDS AND SCHOLARSHIPS

We are pleased to serve as the partner for many organizations and donor families within the Archdiocese of Kansas City in Kansas who use Donor Advised Funds and scholarship funds to benefit organizations and ministries serving our local community. This year CFNEK distributed \$2,519,129 from these funds to further the 10-year vision set forth by Archbishop Joseph F. Naumann for the Church to practice “Complete Joy: Growing as Disciples of Jesus, Making Disciples For Jesus.”

DISTRIBUTION FOR 2017-18	ORGANIZATION	DISTRIBUTION FOR 2017-18	ORGANIZATION
\$2,000.00	Advice & Aid Pregnancy Center	1,000.00	Johnson County Interfaith Hospitality Network, Inc.
100.00	American Cancer Society-High Plains Division	500.00	Kansas Interfaith Action
13,000.00	Apostles of the Interior Life - Brothers	2,000.00	Mount St. Scholastica
5,000.00	Apostles of the Interior Life - Sisters	3,000.00	Olathe Pregnancy Clinic
6,000.00	Archbishop's Call To Share 2017 Campaign	5,000.00	Our Lady of Unity Parish, Kansas City
29,586.82	Archbishop's Call to Share 2018 Campaign	500.00	Our Lady of Unity School, Kansas City
134,304.70	Archdiocese of Kansas City in Kansas	1,500.00	Our Sorrowful Mother's Ministry
1,155.00	Archdiocese of Miami	1,000.00	Parkinson's Foundation
500.00	Archdiocese of San Juan, Puerto Rico	121,768.12	Prairie Star Ranch
1,000.00	Benedictine College	121,768.11	Priest Retirement Fund
1,500.00	Bishop Ward High School	23,500.00	Prince of Peace Parish, Olathe
3,000.00	BMA Foundation	12,000.00	Queen of the Holy Rosary Parish, Overland Park
60,891.72	Boy Scouts of America	4,500.00	Relevant Radio
135,768.11	Catholic Charities of Northeast Kansas, Inc	5,225.00	Rockhurst High School
21,000.00	Catholic Charities USA	500.00	Sacred Heart - St. Joseph Parish, Topeka
131,068.10	Catholic Education Foundation	487,153.46	Sacred Heart Parish & School, Shawnee
2,100.00	Catholic Radio Network	5,000.00	School of Faith
2,000.00	Catholic Relief Services	500.00	Serra Club of Kansas City in Kansas
1,500.00	Christ's Peace House of Prayer	500.00	Sisters of St. Francis of the Holy Eucharist
35,500.00	Church of the Ascension Parish, Overland Park	100.00	Special Olympics Kansas INC
11,000.00	Church of the Nativity Parish, Leawood	500.00	St. Benedict's Abbey
1,000.00	Community Housing of Wyandotte County	1,000.00	St. Francis Xavier Catholic Church, Kansas City, Missouri
2,500.00	Creighton Univeristy AD Discreionary Fund (Jesuit Initiatives)	15,000.00	St. James Academy
500.00	Cystic Fibrosis Foundation, Heart of America Chapter	3,362.00	St. Joseph Parish, Shawnee
500.00	Diocese of St. Thomas in the Virgin Islands	100.00	St. Jude's Children's Research Hospital
20,000.00	Donnelly College	60,996.32	St. Lawrence Catholic Campus Center
275.00	Equestrian Order of the Holy Sepulchre of Jerusalem (North Central Lieutenancy)	2,100.00	St. Mary's School, Ticonderoga, New York
100.00	FAITH Catholic	185,000.00	St. Paul Parish, Olathe
2,000.00	Fellowship of Catholic University Students	300.00	St. Paul's Outreach
121,768.11	Fr. Brink Scholarship Fund	1,000.00	Today and Tomorrow Educational Foundation
850.00	Greater Kansas City Community Foundation	1,350.00	Unbound
100.00	Harvesters-the Community Food Network	5,000.00	United Way of Greater Kansas City
100.00	Hillcrest Covenant Church	121,768.11	United Way of Wyandotte County
8,800.00	Holy Cross Parish, Overland Park	546,014.60	University of Saint Mary
1,500.00	Holy Family Parish , Alma	3,044.86	University of Saint Mary Stadium
10,411.00	Holy Spirit Parish, Overland Park	3,200.00	Water With Blessings
2,500.000	Ignatian Spirituality Center	\$1,500.00	White House Jesuit Retreat Center

This year CFNEK distributed \$2,519,129 from these funds to further the 10-year vision set forth by Archbishop Joseph F. Naumann.





[www.cfnek.org](http://www.cfnek.org)

The Catholic Foundation of Northeast Kansas  
12615 Parallel Parkway | Kansas City, Kansas 66109 | 913.647.3062